

The Richard II

Lot 37 - 3535 Paperbark Crescent

5 BD / 3.5 Bath / 1 BD Suite



latoriaRISE

48 Distinctive New Homes

www.latoriarise.ca



LANGDON WEIR
CONSTRUCTION
LTD.



BuiltGreen

Chris Langdon

Realtor

chrislangdon@sutton.com

MOBILE 250-893-8862

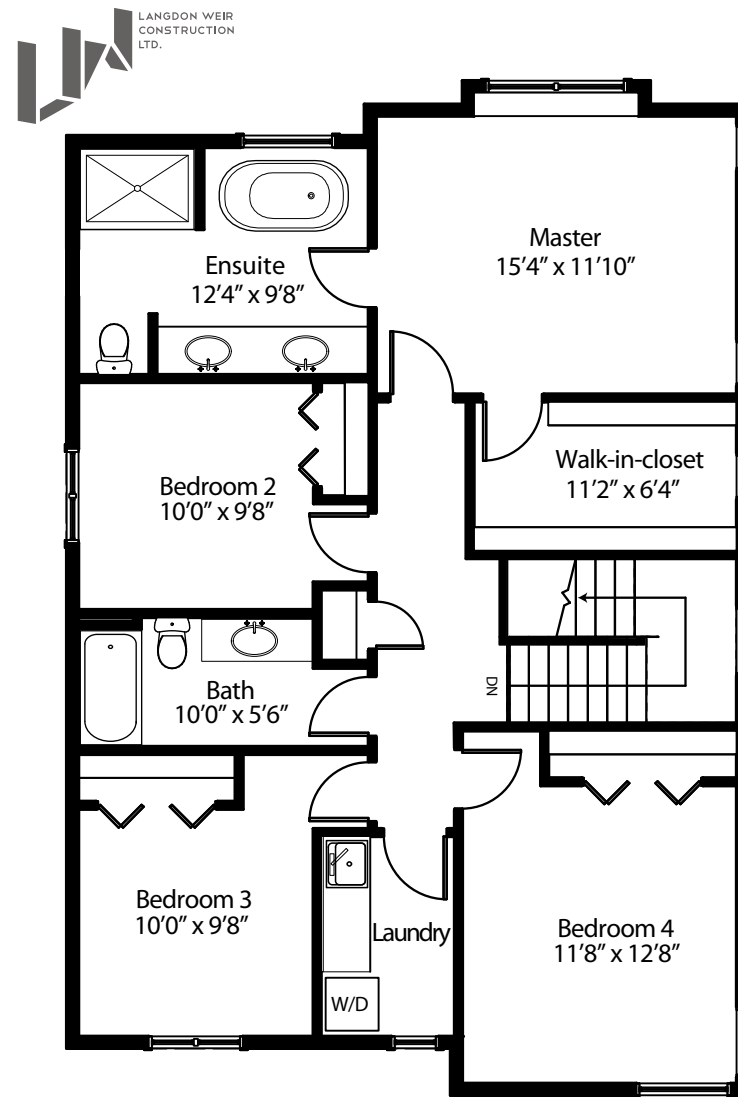
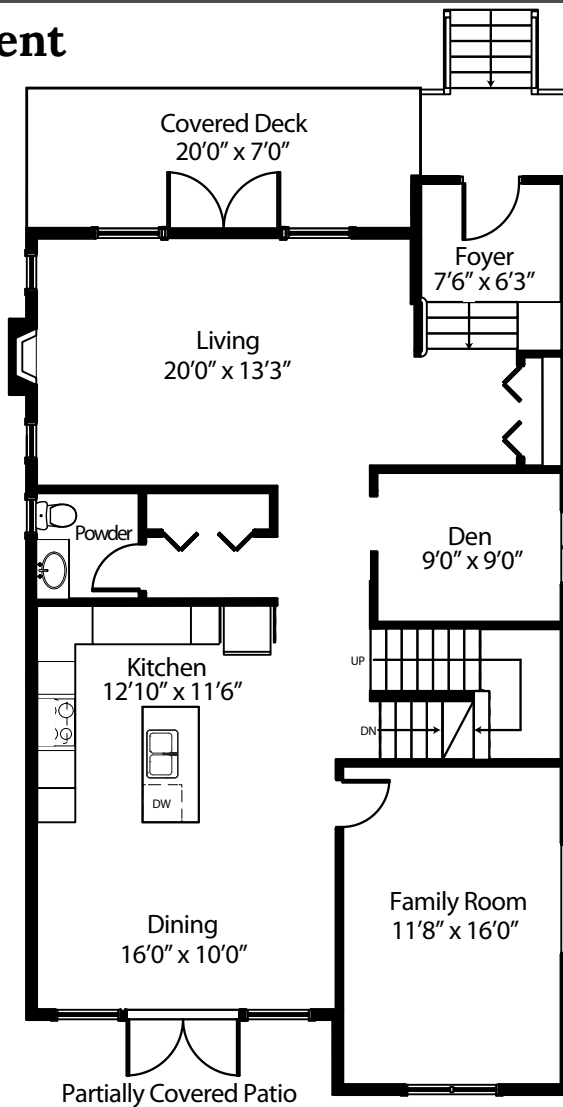
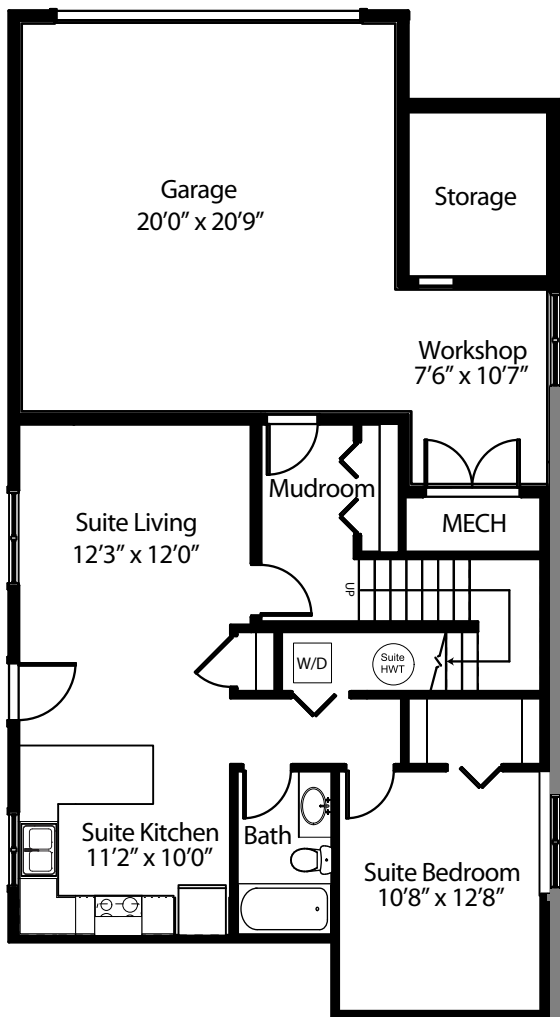
LOWER

MAIN

UPPER

Lot 37 - 3535 Paperbark Crescent

5BD / 3.5 Bath / 1 BD Suite



LANGDON WEIR
CONSTRUCTION
LTD.

SPECIFICATIONS

LOWER	720 SQ. FT.
UPPER	1,301 SQ. FT.
MAIN	1,173 SQ. FT.
TOTAL FINISHED AREA	3,194 SQ. FT.

FEATURES

- 4 BEDROOMS UPSTAIRS; FAMILY, LIVING, DEN ON MAIN
- ONE BEDROOM / 582 ft² LEGAL SUITE W/ 9' CEILING
- OVERSIZE 2-CAR GARAGE WITH WORKSHOP SPACE
- COVERED PATIO & SOUTH FACING BACK YARD
- HEAT PUMP + GAS FIREPLACE + HOT WATER ON DEMAND
- HARDIE COLOR PLUS SIDING + TRIM

BUILT GREEN GOLD



latoriaRISE
48 Distinctive New Homes
www.latoriarise.ca

These plans are not intended to fully or completely represent the final product. All sizes are approximate. Information presented is subject to change without notice.